



St Andrew's Newsletter

22nd May 2020

Growing and learning together with God

This week all the wonderful portfolio messages have really kept me going and made me smile. I cannot emphasise just how impressed I am with all the superb learning experiences that are going on at home. The photos and videos that have been uploaded show just how amazing you all are as parents, and show that so many of our children are making the most of their time at home.

Thank you on behalf of all the teachers for all your wonderful, encouraging messages of support and for all the lovely videos and pictures for 'Thank A Teacher Day'. We all miss you very much!

Half term

Next week is half term!

We know that some of you are struggling with keeping your children focused and enthusiastic about learning after all this time. So make sure that you, and they, take a break next week to play some games, watch a film, read a book, go for a walk or a bike ride, bake some cakes, have a video call with friends and family, build a den, have a water fight and so much more.

Please make sure that you and your family continue to follow the government guidance about social distancing and not mixing with other families.

Here is a link to a lovely story you may want to watch and share with your child about social distancing:

<https://www.youtube.com/watch?v=2PnnFrPaRgY&feature=youtu.be>

Guidance for parents and carers for supporting their children's education during this time

Please follow this link for support from the DfE about helping your children learn at home.

<https://www.gov.uk/guidance/help-primary-school-children-continue-their-education-during-coronavirus-covid-19>

(But maybe after half term!)

School Insights

Messages sent to families

262

214 Last week



Photos and videos shared

763

751 Last week



Positive feedback %

100%

100% Last week



FSM Update

Don't forget that if your working circumstances have changed due to Covid-19 and you believe you may be entitled to free school meals, please do email the school office for an application form.

For more information see

<https://www.gov.uk/apply-free-school-meals>

At this stage the government are not providing fsm vouchers for the half term break. I will order more vouchers after June 1st for those families not in school.

School re-opening updates

Thank you to all the parents who completed the surveys that were sent out for Reception, Year 1 and Year 6. Well done to the Reception parents who had the highest number of responses to the survey. Following on from the letters that I sent out on Monday to those parents, I am carefully considering initial responses and comments from the surveys and making adjustments to the action plans. I wish to reinforce that as written in my letters from Monday, that whilst we will prepare as much as possible to make St. Andrew's ready to receive these pupils from as early as June 1st, the decision to send a child in remains your choice as a parent.

Information from the DfE, the unions and the media is still coming in thick and fast every day. We are working very hard as a staff team to plan as best as we can for the potential re-opening of schools to some year groups from 1st June.

Mr McGuire (Gerry) and the rest of the site team have done an amazing job this week in terms of preparing the inside of the school for re-opening. They will continue to work on the outside of the school next week and we hope to then be able to provide parents with some photographs or videos to show you what classrooms will look like.

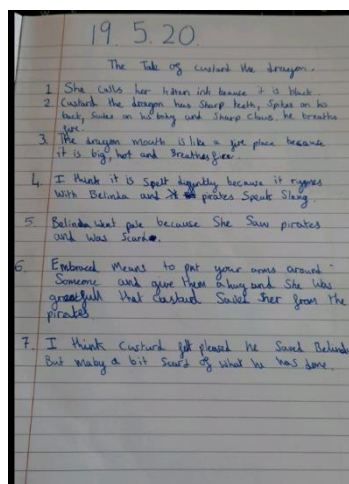
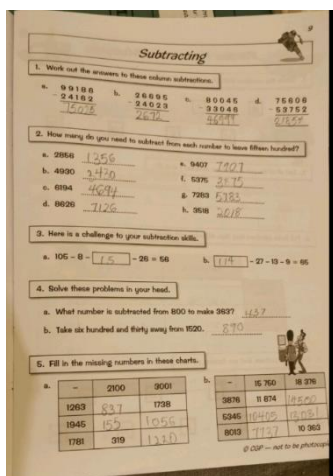
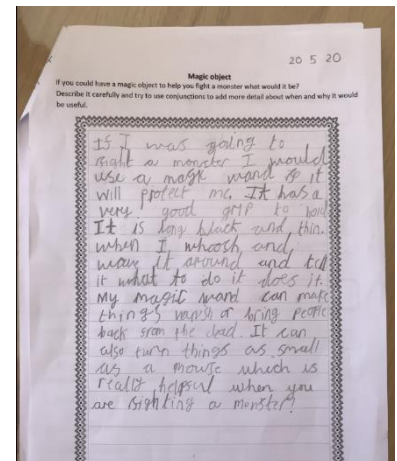
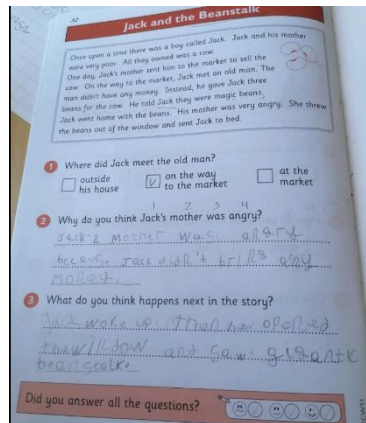
Although it is half term next week, staff will be calling parents in order to confirm numbers for re-opening. Groups will then be allocated based on these figures and final specific details will then be sent out to parents as soon as possible. Please do bear with us as we try to prepare as much and as carefully as possible.

I do appreciate that parents are keen to know about start dates and times so that they can confirm their own working arrangements, so here are some key factors for potential re-opening:

- I have made the decision *not* to reopen to Nursery children on June 1st due to space and staffing constraints
- I have decided to delay the re-opening of school to Reception children until June 8th due to needing more time to prepare the classrooms and resources
- The plan is still to reopen school to Year 1 and Year 6 children on June 1st, subject to Government changes
- Hours will be 8:40 – 3:00 for Year 1 Monday to Thursday, and 8:40 – 12:00 on Friday, 8:40 – 3:30 for Year 6 Monday to Thursday, and 8:40 – 12:30 on Friday. This is to provide staff with their statutory PPA time.
- From June 8th Reception hours will be 9:00 – 3:00 Monday to Thursday, and 9:00 to 11:45 on Friday.
- Children of key workers who are in Years R, 1 or 6 will be allocated a group with their peers on the days they are in school.
- Children of key workers who are in Years 2, 3, 4 and 5 will move to the Year 2 classroom from next week. Parents will need to continue emailing the absence line each week to confirm which days their children will be in school.
- We will continue to use Class Dojo to support home learning for those who are not in school and to keep in touch with all families.

Some more amazing snapshots of the Dojo Portfolio posts.

Highlights this week include: lots of silly socks photos, eating, cooking, Maths and construction activities!





Stay safe and take care.

Nicola Edwards

